

### Gwaith Estyniad $y = mx + c$

1. Darganfyddwch raddiant y llinell syth sy'n uno pob un o'r parau hyn o bwyntiau.

(Awgrym: Gwnewch ddiagram!)

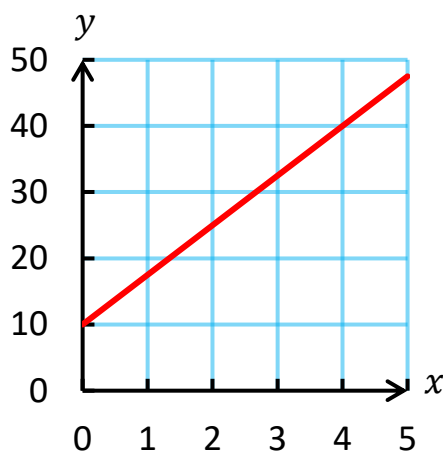
(a) (1, 3) a (3, 6)

(b) (2, 1) a (6, -3)

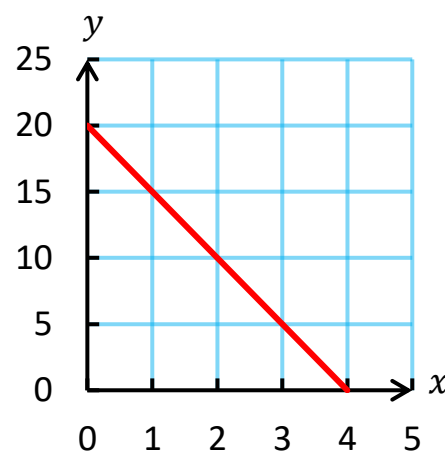
Ateb: ..... Ateb: .....

2. Darganfyddwch raddiant pob un o'r llinellau hyn.

(a)



(b)



Ateb: ..... Ateb: .....

3. Darganfyddwch raddiant a rhyngdoriad-y pob un o'r llinellau hyn.

(a)  $y = 3x - 2$

(b)  $y = -5x - 4$

Graddiant = .....

Graddiant = .....

Rhyngdoriad-y = .....

Rhyngdoriad-y = .....

(c)  $y = 4$

(ch)  $y = 7x$

Graddiant = .....

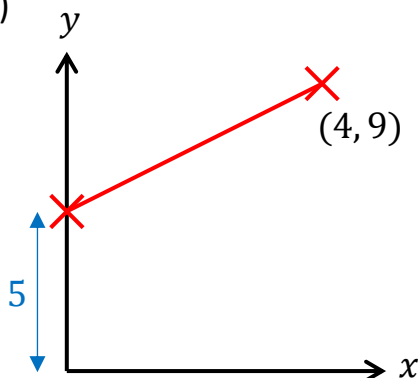
Graddiant = .....

Rhyngdoriad-y = .....

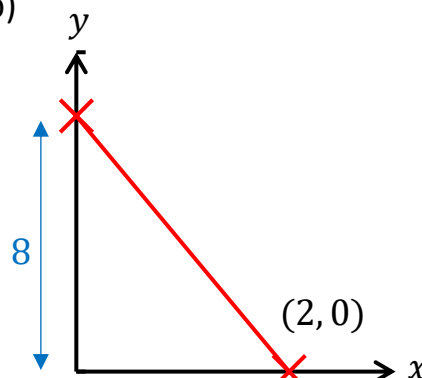
Rhyngdoriad-y = .....

4. Darganfyddwch hafaliad pob un o'r llinellau hyn.

(a)



(b)



Hafaliad: ..... Hafaliad: .....